

8FG25 8FD25

MAIN VEHICLE SPECIFICATIONS

				TOYOTA		TOYOTA	
				30-8FG25	32-8FG25	60-8FD25	62-8FD25
1	Manufacturer						
2	Model						
3	Load Capacity			2500		2500	
4	Load Center			500		500	
5	Power Type			Gasoline		Diesel	
6	Operator Position			Rider Seated		Rider Seated	
7	Tire Type			Pneumatic		Pneumatic	
8	Wheels (x = driven)			2x/2		2x/2	
9	Maximum Fork Height (MFH)			3000		3000	
10	Free Lift			155		155	
13	Fork Size			42x120x1070		42x120x1070	
	Fork Spread (Outside)			1020/240		1020/240	
14	Tilt Range			6/11		6/11	
15	Length to Fork Face			2620		2620	
16	Overall Width			1150		1150	
17	Mast Lowered Height			1995		1995	
18	Mast Extended Height			4220		4220	
19	Overhead Guard Height			2110		2110	
21	Turning Radius (Outside)			2280		2280	
22	Load Distance (Centerline of front axle to front face of forks)			450 (455) **		450 (455) **	
	Rear Overhang			520		520	
23	Basic Right Angle Stacking Aisle Width (Add load length and clearance)			2730		2730	
24	Travel, Max. (FWD/RVS)	Full Load	km/h	18.0/18.0	17.5/17.5	19.5/19.5	19.0/19.0
		No Load	km/h	18.5/18.5	18.0/18.0	20.0/20.0	19.5/19.5
25	Speeds	Lifting	Full Load	600	600	615	615
		No Load	mm/sec	640	640	655	655
26	Lowering	Full Load	mm/sec	500	500	500	500
		No Load	mm/sec	500	500	500	500
28	Max. Drawbar Pull	Full Load	N (kg)	16500 (1680)	18500 (1890)	17500 (1780)	19000 (1940)
		No Load	N (kg)	8600 (880)	8500 (870)	8700 (890)	8700 (890)
	Max. Drawbar Pull at 1.5km/h *	Full Load	N (kg)	—	17000 (1730)	—	17200 (1750)
29	Gradeability at 1.5 km/h *	Full Load	% (tanθ)	—	30	—	31
30	Max. Gradeability *	Full Load	% (tanθ)	28	34	28	34
		No Load	% (tanθ)	19	19	19	19
32	Total Weight			3560		3600	
33	Weight Distribution	Full Load	Front	kg	5280	5300	
		Rear	kg	780	800		
34	No Load	Front	kg	1300	1320		
		Rear	kg	2260	2280		
35	Number			2/2		2/2	
36	Tires	Front		7.00-12-12PR (I)		7.00-12-12PR (I)	
37		Rear		6.00-9-10PR (I)		6.00-9-10PR (I)	
38	Wheelbase			1650		1650	
39	Tread	Front	mm	960		960	
		Rear	mm	965		965	
	Backrest Height			1220		1220	
	Overhead Guard Clearance			1055		1055	
	Counterweight Height			1090		1090	
	Drawbar Pin Center Height			310		310	
	Step Height/Floor Height			435/675		435/675	
40	Underclearance	Min. <Mast>	mm	95		95	
41	(Full Load)	Center of Wheelbase	mm	140		140	
	Grade Clearance	Frame/Counterweight	% (tanθ)	51/41		51/41	
42	Brake	Service (Foot)		Hydraulic		Hydraulic	
43		Parking		Hand	Foot	Hand	Foot
45	Battery			12/27		12/55	
49	Voltage/Capacity (5HR)			V/AH		V/AH	
	Make/Model			TOYOTA/4Y		TOYOTA/1DZ-II [1DZ-III] **	
50	Rated Power/r.p.m.			40/2400 (54/2400)		44 (60) /2600 [41 (55) /2500]	
51	Rated Torque/r.p.m.			162/1800 (16.5/1800)		167 (17.0) /1600 [157 (16.0) /2500]	
52	Internal Combustion Engine			Number of Cylinder		4	
	Piston Displacement			cc		2237	
	Fuel Tank Capacity			liter		60	
55	Transmission			Manual	Powershift	Manual	Powershift
	Type			2/2		2/2	
	Stage			FWD/RVS		FWD/RVS	
				2/2		1/1	
57	Operating Pressure			For Attachments		Mpa (kg/cm ²)	
				15.7 (160)		15.7 (160)	

NOTE: * Computed values.

** Number shown in () is when the forkbar width is other than 1020 mm.

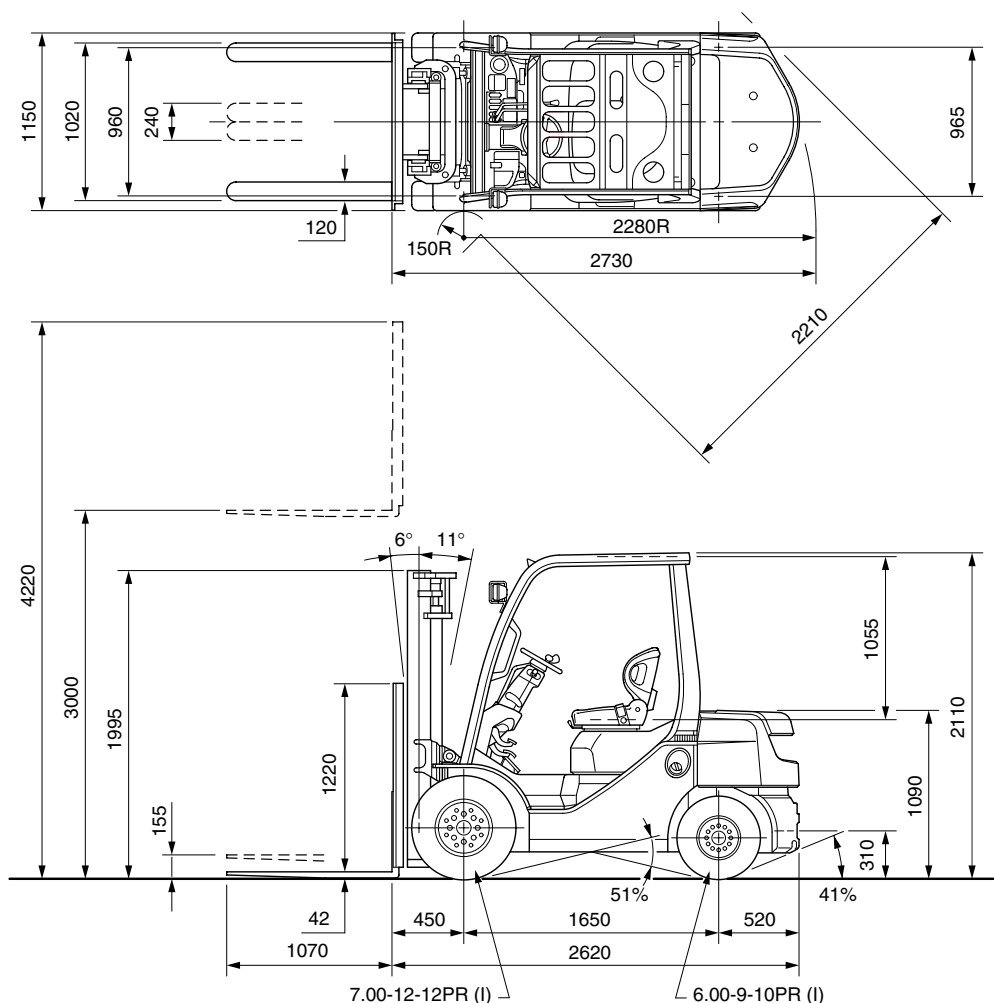
*** 1DZ-II: Non-road Mobile Machinery (97/68/EC; Stage II) EPA Non-road Diesel Emissions (40 CFR Part 89; Interim Tier 2).

1DZ-III: Non-road Mobile Machinery (97/68/EC; Stage IIIA) EPA Non-road Diesel Emissions (40 CFR Part 1039; Interim Tier 4).

DIMENSIONAL DRAWINGS

8FG/8FD25

Unit: mm



UNDERCLEARANCE

Mast (Full Load)	95
Drive Axle (Full Load)	130
Steer Axle (No Load)	160
Center of Wheelbase (Full Load)	140
Counterweight (No Load)	150

SPECIAL TREAD

Model		8FG/8FD25		
Front Tire	Single/Dual	Single	Dual	Dual
Front Tire Size		7.00-12-12PR (I)	5.50-15-8PR (I)	7.00-12-12PR (I)
Overall Width	mm	1150	1450	1610
Tread, Front	mm	960	1105	1190

SPECIAL MAST

Wide Visible Full-Free Lift Two-Stage Mast (FV), Wide Visible Full-Free Lift Three-Stage Mast (FSV)

Model		8FG25		60-8FD25 62-8FD25		70-8FD25 72-8FD25 82-8FD25		8FG25		60-8FD25 62-8FD25		70-8FD25 72-8FD25 82-8FD25			
Type of Mast		FV						FSV							
PERFORMANCE															
Speeds	Lifting	Full Load	mm/sec	560	600	625	560	590	620	600	640	655	600	630	645
		No Load	mm/sec	600	640	655	600	630	645						
	Lowering	Full Load	mm/sec	480	480	480	480	480							
		No Load	mm/sec	420	420	420	420	420							
DIMENSIONS															
Load Distance (Centerline of front axle to front face of forks)		mm		475				485 (490) *							

NOTE: * Number shown in () is when the forkbar width is other than 1020 mm.

RATED CAPACITIES

8FG/8FD25

Unit: kg (W)

V, FV Mast (PN)

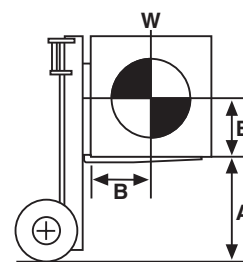
A (mm)	4000	4500	5000
500	2500	2150 [2450]	1700 [2400]
600	2260	1940 [2210]	1540 [2170]
700	2070	1780 [2020]	1400 [1980]
800	1900	1640 [1860]	1290 [1830]
B (mm)	1760	1510 [1730]	1200 [1690]
1000	1640	1410 [1610]	1110 [1580]
1100	1540	1320 [1510]	1040 [1470]
1200	1440	1240 [1410]	980 [1390]
1300	1360	1170 [1330]	920 [1310]

[] for dual tire models.

V, FV Mast (PSC)

A (mm)	4000	4500	5000
500	2500	2300 [2450]	1850 [2400]
600	2260	1940 [2210]	1540 [2170]
700	2070	1780 [2020]	1400 [1980]
800	1900	1640 [1860]	1290 [1830]
B (mm)	1760	1510 [1730]	1200 [1690]
1000	1640	1410 [1610]	1110 [1580]
1100	1540	1320 [1510]	1040 [1470]
1200	1440	1240 [1410]	980 [1390]
1300	1360	1170 [1330]	920 [1310]

[] for dual tire models.



A: Max. Fork Height
B: Load Center
W: Capacity

FSV Mast (PN)

A (mm)	4000	4300	4500	4700	5000	5500	6000	6500	7000
500	2500	2300 [2500]	2000 [2450]	2000 [2450]	1500 [2400]	1250 [2050]	900 [1700]	— [1550]	— [1200]
600	2260	2080 [2260]	1810 [2220]	1810 [2220]	1360 [2170]	1130 [1860]	810 [1540]	— [1400]	— [1080]
700	2070	1910 [2070]	1660 [2030]	1660 [2030]	1240 [1990]	1030 [1700]	740 [1410]	— [1280]	— [990]
800	1910	1760 [1910]	1530 [1870]	1530 [1870]	1140 [1830]	950 [1560]	680 [1300]	— [1180]	— [910]
B (mm)	1770	1630 [1770]	1420 [1730]	1420 [1730]	1060 [1700]	880 [1450]	630 [1200]	— [1100]	— [850]
1000	1650	1520 [1650]	1320 [1620]	1320 [1620]	990 [1580]	820 [1350]	590 [1120]	— [1020]	— [790]
1100	1550	1420 [1550]	1240 [1510]	1240 [1510]	930 [1480]	770 [1270]	550 [1050]	— [960]	— [740]
1200	1450	1340 [1450]	1160 [1420]	1160 [1420]	870 [1400]	720 [1190]	520 [990]	— [900]	— [700]
1300	1370	1260 [1370]	1100 [1340]	1100 [1340]	820 [1320]	680 [1120]	490 [930]	— [850]	— [660]

[] for dual tire models (PN or PSC).

FSV Mast (PSC)

A (mm)	5000	5500	6000
500	1650	1400	1050
600	1490	1270	950
700	1370	1160	870
800	1260	1070	800
B (mm)	1170	990	740
1000	1090	920	690
1100	1020	860	650
1200	960	810	610
1300	900	770	570

MAST SPECIFICATIONS & RATED CAPACITIES

Wide Visible Mast (V), Wide Visible Full-Free Lift Two-Stage Mast (FV), Wide Visible Full-Free Lift Three-Stage Mast (FSV)
8FG/8FD25

Mast Type	Maximum Fork Height	Overall Height			Free Lift		Single Tire				Dual Tire		
		Lowered	Extended		Without Load Backrest	With Standard Load Backrest	Tilt Range		Load Capacity at 500 mm LC		Tilt Range		Load Capacity at 500 mm LC Pneumatic Tire/ Pneumatic-Shaped Cushion Tire
			Without Load Backrest	With Standard Load Backrest			FWD	BWD	Pneumatic Tire	Pneumatic-Shaped Cushion Tire	FWD	BWD	
V	2700	1845	3370*	3920	150	150	6	11	2500	2500	6	11	2500
	3000	1995	3670*	4220	150	150	6	11	2500	2500	6	11	2500
	3300	2145	3970*	4520	150	150	6	11	2500	2500	6	11	2500
	3500	2245	4170*	4720	150	150	6	11	2500	2500	6	11	2500
	3700	2405	4370*	4920	150	150	6	11	2500	2500	6	11	2500
	4000	2595	4670*	5220	150	150	6	9	2500	2500	6	11	2500
	4500	2845	5170*	5720	150	150	6	6	2150	2300	6	11	2450
5000	3095	5670*	6220	150	150	6	6	1700	1850	6	6	2400	
FV	3000	1995	3605	4220	1400	780	6	11	2500	2500	6	11	2500
	3300	2145	3905	4520	1550	930	6	11	2500	2500	6	11	2500
	3500	2245	4105	4720	1650	1030	6	11	2500	2500	6	11	2500
	3700	2405	4305	4920	1810	1190	6	11	2500	2500	6	11	2500
	4000	2595	4605	5220	2000	1380	6	9	2500	2500	6	11	2500
FSV	3700	1795	4265	4920	1235	580	6	6	2500	2500	6	6	2500
	4000	1895	4565	5220	1335	680	6	6	2500	2500	6	6	2500
	4300	1995	4865	5520	1435	780	6	6	2300	2300	6	6	2500
	4500	2065	5065	5720	1505	850	6	6	2000	2000	6	6	2450
	4700	2145	5265	5920	1585	930	6	6	2000	2000	6	6	2450
	5000	2245	5565	6220	1685	1030	6	6	1500	1650	6	6	2400
	5500	2405	6065	6720	1845	1190	6	6	1250	1400	6	6	2050
	6000	2595	6565	7220	2035	1380	6	6	900	1050	6	6	1700
	6500	2845	7065	7720	2285	1630	—	—	—	—	6	6	1550
	7000	3095	7565	8220	2535	1880	—	—	—	—	6	6	1200

NOTE: Height of standard load backrest is 1220 mm.
* with A4 piping, minus 15 mm.