

8FG18 8FD18

MAIN VEHICLE SPECIFICATIONS

1	Manufacturer			TOYOTA	TOYOTA
2	Model			32-8FG18	62-8FD18
3	Load Capacity	kg		1750	1750
4	Load Center	mm		500	500
5	Power Type			Gasoline	Diesel
6	Operator Position			Rider Seated	Rider Seated
7	Tire Type	Front/Rear		Pneumatic	Pneumatic
8	Wheels (x = driven)	Front/Rear		2x/2	2x/2
9	Maximum Fork Height (MFH)	mm		3000	3000
10	Free Lift	mm		145	145
13	Fork Size	T x W x L	mm	35x100x1070	35x100x1070
	Fork Spread (Outside)	MAX./MIN.	mm	920/200	920/200
14	Tilt Range	FWD/BWD	deg	6/11	6/11
15	Length to Fork Face		mm	2310	2310
16	Overall Width		mm	1070	1070
17	Mast Lowered Height		mm	1995	1995
18	Mast Extended Height		mm	4220	4220
19	Overhead Guard Height		mm	2080	2080
21	Turning Radius (Outside)		mm	2010	2010
22	Load Distance (Centerline of front axle to front face of forks)		mm	405	405
	Rear Overhang		mm	420	420
23	Basic Right Angle Stacking Aisle Width (Add load length and clearance)		mm	2415	2415
24	Travel, Max. (FWD/RVS)	Full Load	km/h	18.5/18.5	19.0/19.0
		No Load	km/h	19.0/19.0	19.5/19.5
25	Lifting	Full Load	mm/sec	610	650
		No Load	mm/sec	660	675
26	Lowering	Full Load	mm/sec	500	500
		No Load	mm/sec	550	550
28	Max. Drawbar Pull	Full Load	N (kg)	17500 (1790)	17600 (1790)
		No Load	N (kg)	6300 (640)	6300 (640)
	Max. Drawbar Pull at 1.5km/h *	Full Load	N (kg)	15600 (1590)	16000 (1630)
29	Gradeability at 1.5 km/h *	Full Load	% (tanθ)	40	40
30	Max. Gradeability *	Full Load	% (tanθ)	45	44
		No Load	% (tanθ)	20	20
32	Total Weight		kg	2610	2710
33	Weight Distribution	Full Load	Front	kg	3790
			Rear	kg	570
34		No Load	Front	kg	970
			Rear	kg	1640
35		Number	Front/Rear		2/2
36	Tires	Size	Front		6.50-10-10PR (I)
37			Rear		5.00-8-8PR (I)
38	Wheelbase		mm	1485	1485
39	Tread		Front	mm	885
			Rear	mm	895
	Backrest Height		mm	1220	1220
	Overhead Guard Clearance		mm	1055	1055
	Counterweight Height		mm	1060	1060
	Drawbar Pin Center Height		mm	285	285
	Step Height/Floor Height		mm	395/635	395/635
40	Underclearance	Min. <Mast>	mm	100	100
41	(Full Load)	Center of Wheelbase	mm	115	115
	Grade Clearance	Frame/Counterweight	% (tanθ)	46/42	46/42
42	Brake	Service (Foot)		Hydraulic	Hydraulic
43		Parking		Foot	Foot
45	Battery	Voltage/Capacity (5HR)	V/AH	12/27	12/55
49		Make/Model		TOYOTA/4Y	TOYOTA/1DZ-II [1DZ-III] **
50	Internal Combustion Engine	Rated Power/r.p.m.	KW (JIS ps)	40/2400 (54/2400)	40 (55) /2400 [38 (52) /2400]
51		Rated Torque/r.p.m.	N-m (JIS kg-m)	162/1800 (16.5/1800)	167 (17.0) /1600 [157 (16.0) /2300]
		Number of Cylinder		4	4
52		Piston Displacement	cc	2237	2486
	Fuel Tank Capacity	liter	45	45	
55	Transmission	Type		Powershift	Powershift
		Stage	FWD/RVS		1/1
57	Operating Pressure	For Attachments	Mpa (kg/cm ²)	11.8 (120)	11.8 (120)

NOTE: * Computed values.

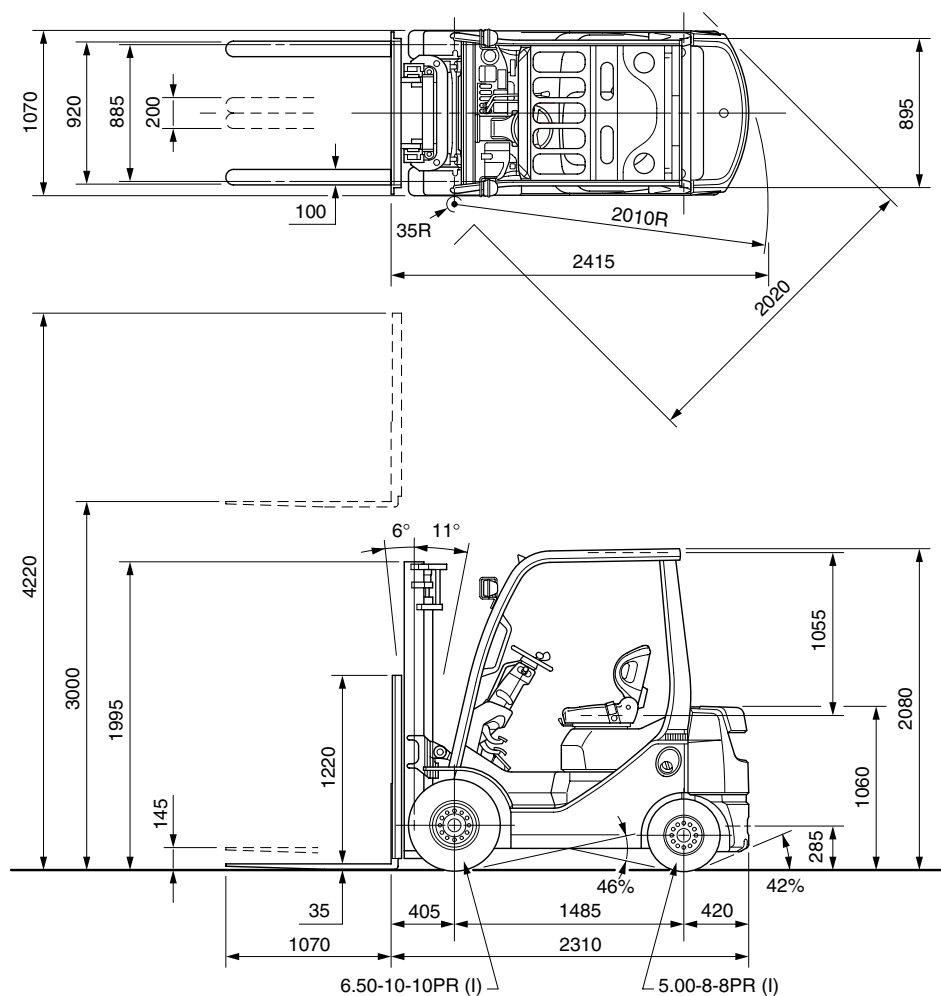
** 1DZ-II: Non-road Mobile Machinery (97/68/EC; Stage II) EPA Non-road Diesel Emissions (40 CFR Part 89; Interim Tier 2).

1DZ-III: Non-road Mobile Machinery (97/68/EC; Stage IIIA) EPA Non-road Diesel Emissions (40 CFR Part 1039; Interim Tier 4).

DIMENSIONAL DRAWINGS

8FG/8FD18

Unit: mm



UNDERCLEARANCE

Mast (Full Load)	100
Drive Axle (Full Load)	105
Steer Axle (No Load)	120
Center of Wheelbase (Full Load)	115
Counterweight (No Load)	120

SPECIAL TREAD

Model		8FG/8FD18		
Front Tire	Single/Dual	Single	Single	Dual
Front Tire Size		6.50-10-10PR (I)	21x8-9-10PR (I)	4.50-12-8PR (I)
Overall Width	mm	1070	1110	1290
Tread, Front	mm	885	920	1010

SPECIAL MAST

Wide Visible Full-Free Lift Two-Stage Mast (FV), Wide Visible Full-Free Lift Three-Stage Mast (FSV)

Model		8FG18	8FD18	8FG18	8FD18
Type of Mast		FV		FSV	

PERFORMANCE

Speeds	Lifting	Full Load	mm/sec	565	600	570	620
		No Load	mm/sec	610	640	615	650
Lowering	Full Load	mm/sec	480				
	No Load	mm/sec	420				

DIMENSIONS

Load Distance (Centerline of front axle to front face of forks)	mm	405	425
--	----	-----	-----

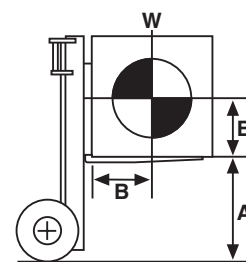
RATED CAPACITIES

8FG/8FD18

Unit: kg (W)

V, FV Mast (PN or PSC)

A (mm)	3700	4000	4500	5000
500	1750	1700	1600	1550
600	1570	1530	1440	1390
700	1430	1390	1310	1270
800	1310	1270	1200	1160
900	1210	1180	1110	1070
1000	1120	1090	1030	1000
1100	1050	1020	960	930
1200	980	960	900	870



A: Max. Fork Height
B: Load Center
W: Capacity

FSV Mast (PN)

A (mm)	4000	4300	4500	4700	5000	5500	6000	6500	7000
500	1600	1550	1500	1500	1450	1100 [1400]	850 [1200]	— [850]	— [600]
600	1440	1390	1350	1350	1300	990 [1260]	760 [1080]	— [760]	— [540]
700	1310	1270	1230	1230	1190	900 [1150]	690 [980]	— [690]	— [490]
800	1200	1170	1130	1130	1090	830 [1050]	640 [900]	— [640]	— [450]
900	1110	1080	1040	1040	1010	760 [970]	590 [830]	— [590]	— [410]
1000	1040	1000	970	970	940	710 [910]	550 [780]	— [550]	— [390]
1100	970	940	910	910	880	660 [850]	510 [720]	— [510]	— [360]
1200	910	880	850	850	820	620 [790]	480 [680]	— [480]	— [340]

FSV Mast (PSC)

A (mm)	5500	6000
500	1200	950
600	1080	850
700	980	780
800	900	710
900	830	660
1000	780	610
1100	720	570
1200	680	540

[] for dual tire models (PN or PSC).

MAST SPECIFICATIONS & RATED CAPACITIES

Wide Visible Mast (V), Wide Visible Full-Free Lift Two-Stage Mast (FV), Wide Visible Full-Free Lift Three-Stage Mast (FSV)

8FG/8FD18

Mast Type	Maximum Fork Height	Overall Height				Free Lift		Single Tire				Dual Tire	
		Lowered	Extended		Without Load Backrest	With Standard Load Backrest	Tilt Range		Load Capacity at 500 mm LC		Tilt Range		Load Capacity at 500 mm LC
			Without Load Backrest	With Standard Load Backrest			FWD	BWD	Pneumatic Tire	Pneumatic-Shaped Cushion Tire	FWD	BWD	
V	2700	1845	3330*	3920	145	145	6	11	1750	1750	7	10	1750
	3000	1995	3630*	4220	145	145	6	11	1750	1750	7	10	1750
	3300	2145	3930*	4520	145	145	6	11	1750	1750	7	10	1750
	3500	2245	4130*	4720	145	145	6	11	1750	1750	7	10	1750
	3700	2405	4330*	4920	145	145	6	11	1750	1750	7	10	1750
	4000	2595	4630*	5220	145	145	6	11	1700	1700	7	10	1700
	4500	2845	5130*	5720	145	145	6	6	1600	1600	7	10	1600
5000	3095	5630*	6220	145	145	6	6	1550	1550	7	5	1550	
FV	2870**	1930	3440	4090	1365	715	6	11	1750	1750	7	10	1750
	3000	1995	3570	4220	1430	780	6	11	1750	1750	7	10	1750
	3300	2145	3870	4520	1580	930	6	11	1750	1750	7	10	1750
	3500	2245	4070	4720	1680	1030	6	11	1750	1750	7	10	1750
	3700	2405	4270	4920	1840	1190	6	11	1750	1750	7	10	1750
	4000	2595	4570	5220	2030	1380	6	11	1700	1700	7	10	1700
FSV	3700	1795	4240	4920	1260	580	6	6	1600	1600	7	5	1600
	4000	1895	4540	5220	1360	680	6	6	1600	1600	7	5	1600
	4300	1995	4840	5520	1460	780	6	6	1550	1550	7	5	1550
	4500	2065	5040	5720	1530	850	6	6	1500	1500	7	5	1500
	4700	2145	5240	5920	1610	930	6	6	1500	1500	7	5	1500
	5000	2245	5540	6220	1710	1030	6	6	1450	1450	7	5	1450
	5500	2405	6040	6720	1870	1190	6	6	1100	1200	7	5	1400
	6000	2595	6540	7220	2060	1380	6	6	850	950	7	5	1200
	6500	2845	7040	7720	2310	1630	—	—	—	—	7	5	850
	7000	3095	7540	8220	2560	1880	—	—	—	—	7	5	600

NOTE: Height of standard load backrest is 1220 mm.

* with A4 piping, minus 15 mm.

** Set only to a Russian specification.